

Mayoral Forum's

# Plan for Canterbury

## Tā te Kāhui Koromatua Mahere mō Waitaha

2026-2028

CANTERBURY  
Mayoral Forum

***Ko Ngā Tiritiri o te Moana  
ngā maunga***

***Ko ngā wai huka ngā awa  
i rere tonu mai***

***Ko Ngā Pākihi Whakatekateka  
o Waitaha te whenua***

***Ko Marokura, ko Mahaanui,  
ko Araiteuru ngā tai***

***Tihei mauri ora!***

***The Southern Alps stand above***

***The snow-fed rivers  
continually flow forth***

***The plains of Waitaha extend out***

***To the tides of Marokura,  
Mahaanui and Araiteuru***

***Behold there is life!***



# Contents

## Ngā ihirangi

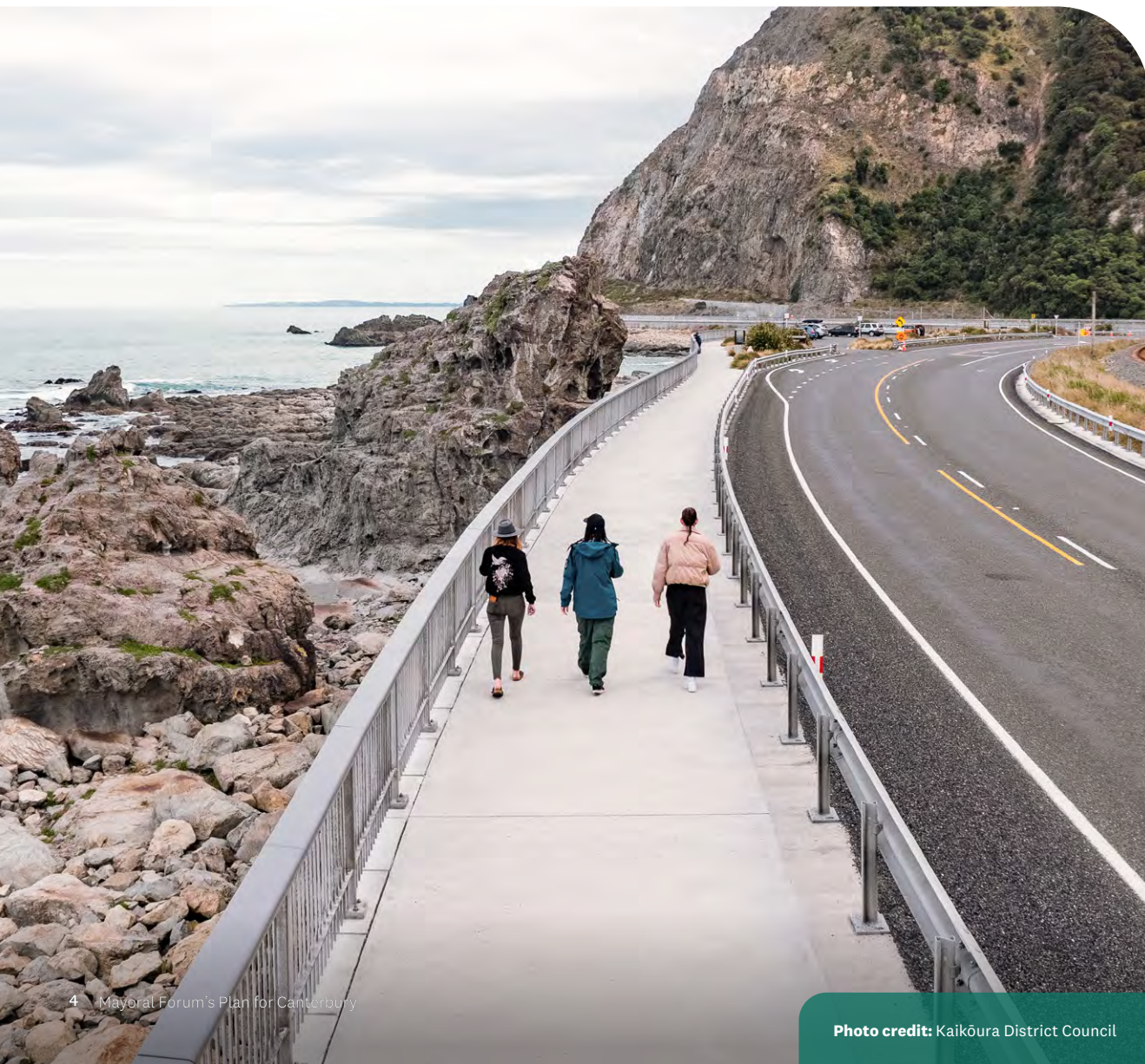
From the Chair	<b>4</b>
Mayoral Forum's Plan for Canterbury	<b>6</b>
Vision	<b>8</b>
Our shared future	<b>10</b>
A significant time to reform	<b>12</b>
Our priorities	<b>13</b>
Strengthening shared prosperity for all our communities	<b>15</b>
Sustainable environmental management of our habitats	<b>20</b>
A changing climate	<b>23</b>
Nurturing important relationships	<b>25</b>
Who is delivering this	<b>26</b>

# From the Chair Tā te Tiamana

**Waitaha Canterbury is in an enviable position to meet global and national challenges with our mix of unique environments, local businesses with a capacity for innovation, strong agricultural sector, and our capable and connected communities.**

The Canterbury Mayoral Forum has a vision for a strong, resilient, prosperous Canterbury, and we're clear on how to lead Canterbury through this time of major change.

We are all navigating central government's significant reforms to resource management, the local government system, the emergency management structure and the way essential local and regional council work is funded. Councils are adapting to these unprecedented changes, along with a myriad of global pressures, and we must continue to do so collectively.



We are grappling with the complexity of these interrelated reforms and are making tough decisions while delivering essential services to our communities. The Forum will continue to influence central government and be the unified voice for Canterbury as the central government's work continues.

Our Plan for Canterbury will supercharge the Canterbury region's key attributes as we build a future for all our communities and for future generations. Our collective actions, now, must have a real and measurable impact. This is crucial, as the region's population's high-growth projections indicate there will be 200,000 more people calling Canterbury their home by 2048.

Our big three priorities are clear: to achieve prosperity for all our communities, enhance sustainable environmental management, and ensure we can limit how climate change impacts our residents and infrastructure through clever and timely adaptive measures.

The Forum is acutely aware that our region's prosperity is not only economic; it's also social. Supporting mental health and social wellbeing, strengthening multi-agency work with the Public Services Commission involving youth, housing access, and equitable pathways for whānau will help lift all communities.

As we face an increased frequency of natural disasters, ensuring natural hazard preparedness and advocacy for proactive, long-term risk reduction is a key part of our region's resilience.

Energy security also plays a big part in our region's resilience. To move to a low-emissions future, the Forum will support the region to foster partnerships and advocate to improve our energy security and systems.

The Forum will also advocate with government for more investment in the transport network, and enable the protection of our biodiversity and pest management.

At the heart of delivering these outcomes are the relationships we build and nurture. Strong, respectful relationships with mana whenua (Ngāi Tahu and Papatipu Rūnanga), central government, Canterbury councils, the private sector, the business community, tertiary and research providers, and our wonderful communities are what make it all possible.

We will realise our vision by thinking regionally, not just locally. Collective purpose and confident leadership are paramount during this time of unprecedented change. The Forum will advocate for Canterbury and ensure that each community can see their district's identity in each workstream and regional decision.

Councils working together on regional issues and opportunities will deliver greater efficiency and better outcomes for our communities, now and into the future.



**Nigel Bowen**  
Chair

# Mayoral Forum's Plan for Canterbury Tā te Kāhui Koromatua Mahere mō Waitaha



**The Mayoral Forum's Plan for Canterbury sets out how the Forum will work together to deliver collective advocacy and action for the region.**

It outlines shared priorities, identifies where the Mayoral Forum can have the greatest impact, and guides engagement with central government and other key partners, ensuring Canterbury's voice is represented.



# Vision

## Te matawhānui

### The Mayoral Forum's vision for Canterbury is:

A strong regional economy with resilient, connected communities and a better quality of life for all.

### In this we echo the guiding whakataukī of Ngāi Tahu:

Mō tātou, ā, mō kā uri ā muri ake nei – for us and our children after us.

### What we think this looks like for Canterbury:



Strong partnerships with mana whenua



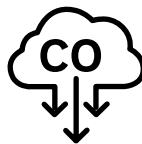
Accelerated sustainable and inclusive economic growth



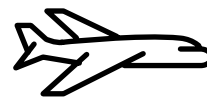
Climate-resilient, future ready infrastructure



Diverse, affordable, quality housing and choices for a growing population



Equitable transition to a low-emissions, renewable energy future



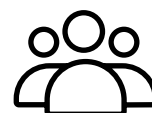
A strong tourism sector supported by resilient infrastructure and appropriate regulatory funding tools



Working with the private sector on growth opportunities



A well-functioning local government sector



Great communities



# Our shared future

## Tō tātou anamata

**Waitaha Canterbury has world-class landscapes, thriving communities, and a spirit that inspires residents, welcomes visitors, and helps drive Aotearoa forward. Our region is the largest by land area, with diverse landscapes, abundant water (over 78,000 km of rivers and streams), and large areas of productive flat land.**

Canterbury has become a launch pad for global innovation, with strengths in agritech, aerospace, education and energy.

We have a strong agricultural sector, with innovative farmers and agribusiness making a significant contribution to the country's Gross Domestic Product (GDP).

We are also a strong base for tourism, with the region featuring some of the most spectacular scenery, including mountains, braided rivers, lakes and beaches in Aotearoa New Zealand.

Waitaha Canterbury is a region with strong national and international connections, with the rare distinction of serving as the main gateway to Antarctica. Canterbury is home to the South Island's major international airport (Christchurch), a regional airport (Timaru), two seaports (Timaru and Lyttelton) and inland ports at Rolleston.

Through the Mayoral Forum, Canterbury's well-established structures and coordinated approach ensure our communities are well supported, connected, and heard. We will use this to our advantage to support discussions on addressing the drivers for change in Canterbury.

Our councils are facing significant challenges and change over the coming years. The impact of inflation, central government policies and addressing climate change resilience will influence the shape and functions of local government and the communities we serve. Each council may find this impacts them in different ways and by sharing knowledge and experience, we can get the best results for Canterbury.

### **A voice for Canterbury**

Having a strong local voice, through this time of unprecedented change, will help influence outcomes and ensure the continued success of our communities. The Canterbury Mayoral Forum will actively engage with central government to shape policies and programmes that support local communities, while championing the future of local government across the Canterbury region. We are committed to working alongside neighbouring Mayoral Forums and groups to build a collaborative governance future across Te Waipounamu South Island. As part of our advocacy work, the Mayoral Forum makes considered submissions on government reform programmes and other legislation to provide a whole-of-Canterbury view. This will continue as the term progresses.

***The Canterbury Mayoral Forum will actively engage with central government to shape policies and programmes that support local communities.***

A key priority for the Mayoral Forum this triennium is to work collectively, and with central government, to deliver positive and enduring outcomes for our communities, while ensuring that our communities can see the 'local', and in particular 'their local'.

### **Forum members strongly support the concept of localism and subsidiarity**

We have developed a vision and strategic objectives that acknowledge our strength as Canterbury. Forum members strongly support the concept of localism and subsidiarity, in that the function of governance and decision-making should be devolved to the level of government closest to affected communities.

Standing together for Canterbury, we celebrate a win for any part of the region as a win for the whole region. During hard times and when disaster strikes, we all pitch in to help.

A wise and balanced approach to sustainable development requires 'gifts and gains', recognition of our diverse interests and values, and focusing on agreement where we can, without pushing for consensus where it does not exist.



# A significant time to reform Kia whakaumutia

**Local government in Aotearoa New Zealand is entering a period of profound and simultaneous reform.**

Across 2025–2028, councils are expected to implement major changes to the resource management system, local government structure, emergency management legislation, and funding and rating settings – all while maintaining core services, supporting rapid population growth, and responding to increasing natural hazard risks.

For Waitaha Canterbury, a region defined by fast-growing urban centres, diverse rural communities, significant environmental assets, and a complex hazard profile, the scale and convergence of these reforms create both opportunity and pressure.

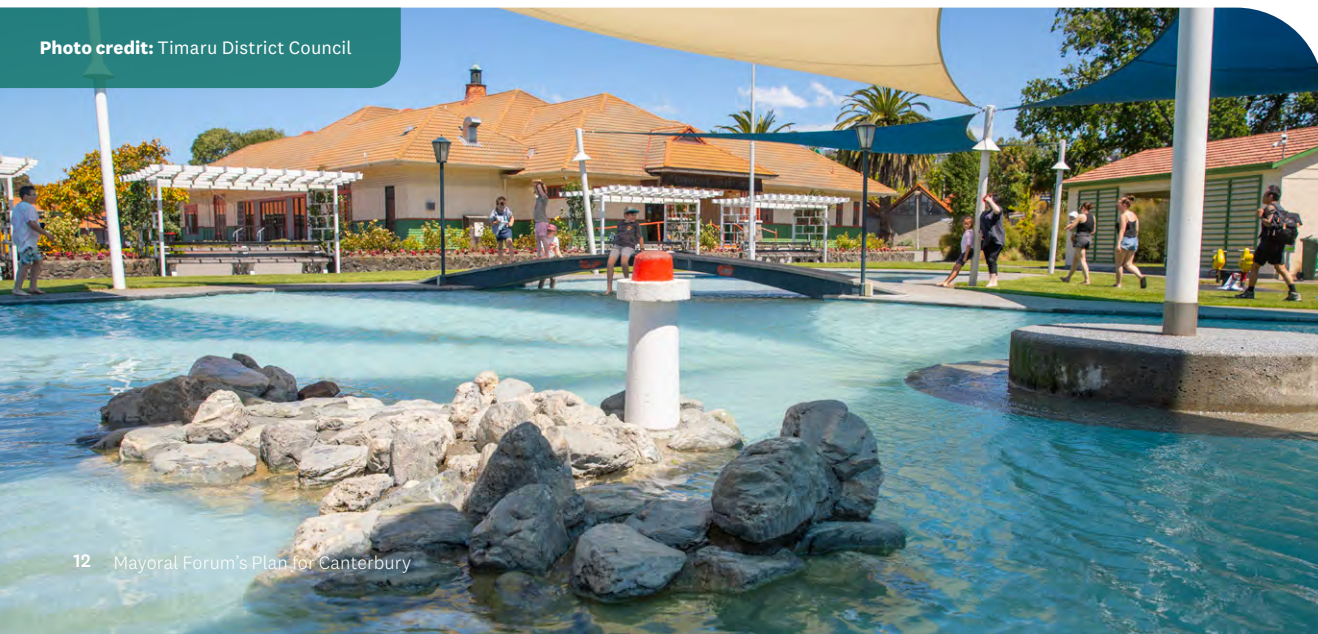
The Mayoral Forum recognises and is supportive of the Government’s objectives to improve system performance, strengthen accountability, lift economic productivity and deliver better long-term outcomes for communities. We acknowledge that aspects of the current system are under pressure and that change is required to address long-standing economic, environmental, and funding challenges.

The scale and pace of change across the reform programme will require careful management, and significant investment from communities and councils to transition to new statutory responsibilities. This means tough decisions lie ahead to both fund and implement the changes, while also providing the functions and services that our communities need and love.

Given the scale and breadth of the current reform proposals, a significant focus for the start of this triennium will be addressing the reform proposals, noting that the outcomes from these proposals will impact local government going forward.

***The Mayoral Forum will provide leadership for Canterbury through central government reforms, including supporting development of the regional spatial plan.***

Photo credit: Timaru District Council





# Our priorities

## Ō mātou aronga

To achieve its long-term vision, the Mayoral Forum has identified three priority areas for the Mayoral Forum's leadership, facilitation and advocacy in this local government term:

### Strengthening shared prosperity for all our communities

Focusing on building on our economic strengths and developing emerging sectors, growing, attracting and retaining a skilled workforce, improving the transport network, coordinating strategies for housing our communities and maximising the opportunities presented by regional re-organisation.

### Sustainable environmental management of our habitats (land, air, water and ecosystems)

Focusing on land use and freshwater management in the face of significant reform.

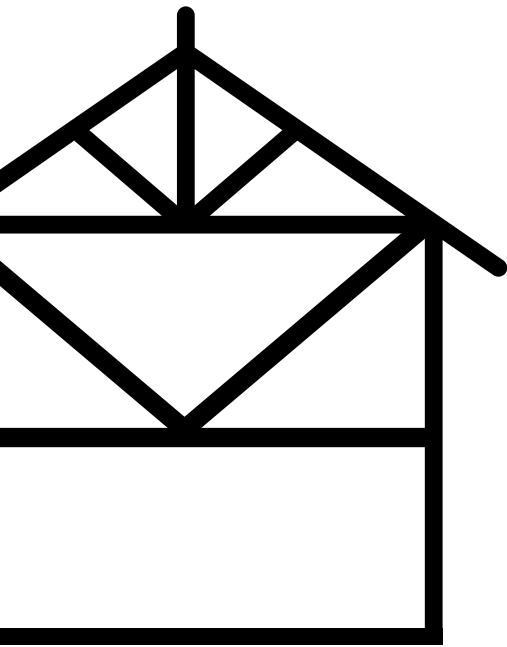
### Preparing communities for climate change

Working together on climate action planning, building community resilience, and making our infrastructure as strong as it can be.

We recognise all elements that impact our environment, communities and businesses are important. In determining our priorities, we considered the significant shift in operating context, how much we can realistically deliver or progress this term, and how best to balance time and funding with competing demands.

We have prioritised these three areas as we think this is where we can make the most impact while applying ourselves fully to the change in front of us.





# Strengthening shared prosperity for all our communities

## Te whakapakari i te tōnuitanga o te hāpori

**The Canterbury Ambition was developed by Business Canterbury, led by businesses in our region and supported by the Canterbury Mayoral Forum.**

Since September 2024, Business Canterbury, the Canterbury Mayoral Forum and local businesses have come together to form a shared ambition for our region. The progress we have made toward the goal of a shared ambition – in bringing the private and public sectors together from right across Canterbury – has created the conversations and conditions for alignment and clarity.

This Ambition outlines what sets Canterbury apart, and the key ingredients for Canterbury's long-term success. The Ambition is built on three interconnected pillars – Environment, Innovation, and Lifestyle. Strong businesses and strong communities are innately linked to our environment, our lifestyle, and our capacity for innovation.

Waitaha Canterbury is globally competitive, increasing trade and investment, and attracting top talent. The Canterbury Ambition shares this view, recognising that our strong businesses and cohesive communities are innately linked to our environment and lifestyle, and our capacity for innovation.

In August 2025 the Mayoral Forum published Waitaha Canterbury World-stage Ready, which provides a snapshot of the key pillars for a future Canterbury regional deal proposal: transport, housing, energy, infrastructure and innovation.

Shared prosperity across Canterbury focuses us on continually building on our economic strengths and developing emerging sectors. This includes growing, attracting and retaining a skilled workforce, improvement of the transport network, coordinating strategies for housing in our communities, and maximising the opportunities presented by the current reform proposals.

Canterbury has many natural advantages, significant infrastructure, and a range of tertiary education providers and research institutes. We are well-placed for research-informed innovation in sustainable primary production, agricultural value chain, aerospace, biotech and precision medicine sectors, clean tech manufacturing and high-value manufacturing. This will lift productivity and the prosperity of our region.

Despite these advantages, Canterbury's GDP per person still lags behind the country as a whole, although the region contributes 13 percent of New Zealand's GDP. To lift wages and incomes, we need more jobs and skilled workers to fill them, through 'growing our own' but also by attracting and retaining newcomers. To build on our strengths, we need a sustained focus on the region's key industries, as well as an eye to emerging sectors. It is critical that we continue to consider future industry skills needs and plan for them.

Agriculture is the long-standing backbone of the Canterbury economy, playing a significantly more important role in Canterbury's economy than in Auckland or Wellington. It also generates a significant amount of economic activity from supporting industries including manufacturing, transport and warehousing, and financial and insurance services. Diversifying and adding value to our agricultural production, through innovative techniques or new technologies, improves market resilience and has the potential to reduce environmental impact.

Research and development not only supports agriculture, but also has Canterbury at the leading edge of aerospace.

Canterbury is home to a burgeoning aerospace industry because of its topography, infrastructure and proximity to international air and seaports.

The region's low air traffic, advanced manufacturing capabilities, and supportive regulatory environment make it ideal for testing and developing cutting-edge aerospace technologies.

An increasing number of local aerospace companies are contributing to solutions for global challenges such as climate change and sustainable propulsion. The industry is supported by a strong pipeline of engineering talent being produced by the University of Canterbury along with established links with academia and industry research and development.

***The Mayoral Forum will work with the region's economic development agencies to encourage and advocate for economic development opportunities for investment in our regional economy***

***The Mayoral Forum will advocate for a centrally coordinated workforce skills and development plan to minimise known/forecast skill gaps through training pathways, foster business growth and support employment opportunities for Cantabrians and New Zealanders.***

## **Transport**

Our region has a vast transport network. It is how we connect with each other, within Canterbury, the South Island, the rest of the country and internationally. Transport strongly influences economic development, supporting supply chains that are critical for getting our exports to market and imports back to us. The system faces several challenges; historic underfunding in transport infrastructure and an increase in the number of severe weather events around the country mean that the transport network needs to be more resilient than ever. Climate change effects highlight the importance of reducing transport emissions and encouraging the use of sustainable modes of transport where we can.

Maintaining and renewing our transport system to keep it fit for purpose requires significant investment; to maintain the existing network, develop new roading options, and support increased public transport.

Current funding sources from local authorities and the National Land Transport Fund will not meet current needs, particularly when faced with resilience issues.

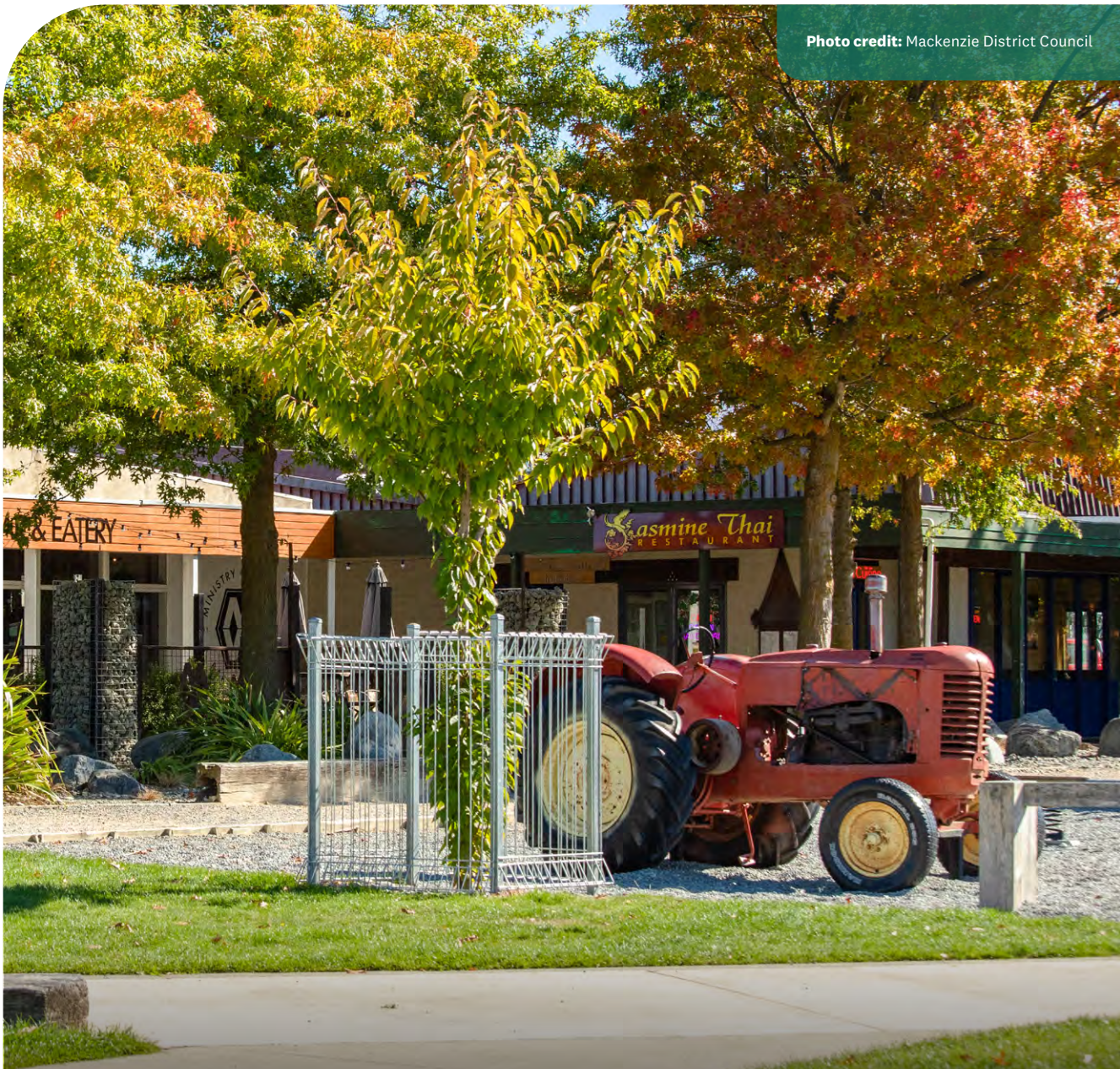
It is estimated that \$11 billion is required over the next 10 years to materially impact the range of issues transport is facing in the region.

### **Overcoming central government underinvestment**

Of significant concern to Canterbury is the chronic underinvestment by central government in Canterbury's transport network.

The 2024–2027 National Land Transport Fund invested only 5 per cent of its budget in Canterbury, despite Canterbury having around 13 per cent of the country's population, producing around 13 per cent of gross domestic product, and up to 14 per cent of vehicle kilometres travelled.

*The Mayoral Forum will advocate with government to address the chronic underinvestment by central government in Canterbury's transport network.*



## Energy

Energy security is critical for Canterbury to be able to continue to pick up and support opportunities for the region. It is fundamental to our prosperity, resilience and wellbeing. It underpins our key sectors, from agriculture and manufacturing to tourism and emerging industries.

There are strong connections in Canterbury between energy, water, food production and climate change. There are opportunities to support diverse approaches, including new technologies in the energy sector, as renewable energies become an increasingly important part of responding to climate change risks.

Canterbury has a chance to be at the forefront of an energy transition to attract and retain talent, investment and technologies.

In 2024, the Mayoral Forum initiated the regional energy workstream. Phase One delivered the Canterbury Energy Inventory. The next stage is the finalisation of the strategic framework to provide the overarching structure and direction for Canterbury's regional energy strategy, setting out a shared vision, outcomes and strategic priorities for coordinated action.

The Regional Energy Strategic Framework acknowledges that our energy future is anchored in the strengths that define our region: our distinctive natural environment, a culture of innovation, and a sector committed to working collaboratively to deliver for our communities.

The Framework positions Canterbury as a leader in sustainable energy and recognises the region's significant role in the wider South Island and New Zealand energy landscape.

The next stage of work will translate the Strategic Framework into an action plan, a key part of a coordinated regional approach to energy.

***The Mayoral Forum will support the region to foster partnerships and advocate to improve our energy security and systems.***

## Our communities

Prosperity is also about looking after ourselves and each other, celebrating our diversity and taking pride in our common identity as Cantabrians. We know that the COVID-19 pandemic exacerbated the demand for mental health services in Canterbury, which was already elevated following the 2010–2011 earthquakes and the 2019 terrorist attack. Hearteningly, in the 2023 General Social Survey, 80 per cent of Cantabrians rated their overall life satisfaction between 7–10 (on a scale where zero is completely dissatisfied and 10 is completely satisfied). This was higher than the national average, as well as higher than those in Auckland, but slightly lower than Wellington.

The Mayoral Forum works closely with the Regional Public Service Commissioner (RPSC). The RPSC brings central and local agencies together, strengthens collaborative approaches, and aligns national priorities with regional needs. This systemwide view supports coordinated action to progress economic growth and social wellbeing across the region.



**Focus areas for the three-year period for the regional public service include:**

- supporting children and young people in Canterbury to reach their full potential. Progressing a coordinated, multi-agency approach that targets areas where collective impact is greatest. This includes contributing to initiatives that improve school attendance and strengthen early intervention pathways.
- enabling and supporting region led economic and sustainability strategies by contributing to joint work programmes across skills development, regional deals, and strategic planning, supporting coordinated action and avoiding duplication.
- improving equitable access to safe, suitable, and affordable housing by supporting regional planning, contributing to systemwide solutions, and aligning efforts across agencies to address pathways to stable housing.
- enabling whānau access to services, resources, and healthy environments that support wellbeing, by strengthening collaboration across agencies and improving the coherence of support systems.

The Mayoral Forum has much to contribute to this work programme given how close local government is to its communities. We will continue to support and monitor progress in these critical priority areas.

**Community preparedness**

Canterbury is one of the country's most beautiful regions, however, it also must deal with a wide range of significant natural hazards and risks.

Bordered to the west by the Southern Alps and the Alpine Fault, which has a 75 per cent probability of producing a magnitude 8+ earthquake in the next 50 years.

To the east our stunning coastline is at risk of tsunamis, with a 25 per cent chance of a Hikurangi Subduction Zone event in the next 50 years. This alongside more frequent hazards such as floods, fires and other events means we need to be ready.

The Mayoral Forum wants to ensure that our communities are as prepared as possible for such an event and that people, homes, livelihoods and communities are protected from the worst impacts. The Mayoral Forum strongly supports the work of the Canterbury Civil Defence Emergency Management Joint Committee in preparing for major natural hazard incidents.

# Sustainable environmental management of our habitats

## Toitū te taiao

Canterbury is New Zealand's largest region by land area. We have:

**21%**

of New Zealand's highest-quality soils

More than

**4,700**

lakes and tarns

**19%**

of the total area farmed in New Zealand

Over

**78,000km**

of rivers and streams

Around

**70%**

of New Zealand's groundwater

**800km**

of coastline

**63%**

of the country's irrigated land area

**11,600km<sup>2</sup>**

of coastal marine area

Past land-use decisions, agricultural intensification since the 1970s, and increased urbanisation have, put pressure on the region's rivers, streams and groundwater aquifers, and on indigenous biodiversity. We have sustained a focus on rebalancing human impact on our land and water through the development of the Canterbury Water Management Strategy, investment in flood resilience, and protecting and improving our indigenous biodiversity.

## **Canterbury Water Management Strategy**

In 2009, the Mayoral Forum launched the Canterbury Water Management Strategy (CWMS) and continues to oversee its implementation.

Water is seen as an enabler for regional economic development. More recently the relationship between water, food production and energy security and how these elements are linked to community resilience have surfaced. Consideration of water issues also needs to take place in the context of impacts/influences of climate change and how this may shape water and land management decisions going forward.

National and regional freshwater policy has changed since the inception of the CWMS. The government consulted in 2025 on freshwater national direction policies. It is expected that more feedback will be requested early 2026 on a revised National Policy Statement for Freshwater Management and National Environmental Standards for Freshwater.

These coming changes will likely have an impact on the CWMS with a shift towards greater centralised decision-making and a weakening of the protections, rights and interests afforded to iwi and hapū and reduced opportunities for mana whenua input into strategic decisions on resource management. However, the new local leadership groups established following a review of the zone committees, which support the delivery of the CWMS, provide a clear opportunity to continue local collaboration and support the transition through this change.

***The Mayoral Forum will continue oversight of the Canterbury Water Management Strategy.***

## **Flood management solutions**

Flooding is New Zealand's most frequent and costly natural hazard, and recent events across the country highlight the increasing scale and urgency of the challenge. Canterbury, with more than 78,000km of rivers and streams, remains particularly exposed to severe and repeated flooding, as demonstrated by the 2021 and 2025 Banks Peninsula events. Effective future flood management must take a holistic approach that integrates ecological and environmental considerations, whole-of-catchment management, spatial planning, managed retreat, building controls, and strong community preparedness.

The investment required to maintain and improve the resilience of existing flood protection schemes alongside new infrastructure work is substantial. Regional councils estimate a national funding shortfall of around \$150 million per year to ensure current schemes can continue to protect communities, infrastructure, and productive land. These schemes safeguard both local and national assets and underpin sustainable regional economies. Permanent co-investment in flood protection would shift the focus from costly disaster response and recovery to proactive, long-term risk reduction, delivering better outcomes and lower overall costs for the country. This partnership approach is essential to strengthening resilience, protecting communities, and enabling Canterbury and Aotearoa to adapt to a changing climate.

Te Uru Kahika, the representative body for Regional and Unitary Councils Aotearoa, has prepared a business case for central government co-investment in flood protection schemes. The outcome sought from these co-investment decisions would be New Zealanders having assurance that suitable 'fit-for-the-future', risk-aligned, climate change resilient and environmentally sensitive flood protection schemes are in place throughout New Zealand.

You can download the case for co-investment in flood management here.

***The Mayoral Forum will continue to advocate for enduring Central Government co-investment in river and flood management.***

### **Protecting our biodiversity and managing pests**

A key part of sustainable environments is also enabling flourishing biodiversity. Indigenous biodiversity in Aotearoa New Zealand is unique – many of our plants, birds, bats, insects, fungi, reptiles and fish are only found on our islands.

We have a collective responsibility to safeguard our biodiversity for present and future generations. As part of this, the Mayoral Forum supported the formation of the regional Biodiversity Champions in 2021, an elected member group with representatives from all of Canterbury's councils. The group works together to promote biodiversity and advocate for the role of councils and communities in weaving biodiversity through Canterbury's living and working landscapes.

With the revitalised Waitaha Canterbury Biodiversity Strategy adopted by the Canterbury Regional Council in late 2025, and many other Canterbury councils developing district biodiversity strategies, our group has an opportunity to support implementation by councils and promote collective and coordinated action towards a shared vision for biodiversity in the region.

Equally important is the work to manage pests to help protect livelihoods and biodiversity hotspots. Biosecurity in Waitaha Canterbury is focused on protecting our region's economy, cultural values, health, production, recreational spaces and indigenous biodiversity from pests and invasive organisms.

Biosecurity Advisory Groups, comprising community members, mana whenua and regional and territorial authority councillors provide advice and feedback on pest management work. They also act as biosecurity champions to prevent the spread of pests within communities, and help raise awareness of new and emerging biosecurity threats and promote community reporting of potential threats.

***The Mayoral Forum will support the Biodiversity Champions as a key conduit for a shared regional approach to biodiversity.***

***The Mayoral Forum will support the Biosecurity Advisory Groups as forums for working together to promote and encourage community involvement in pest management in Waitaha Canterbury.***

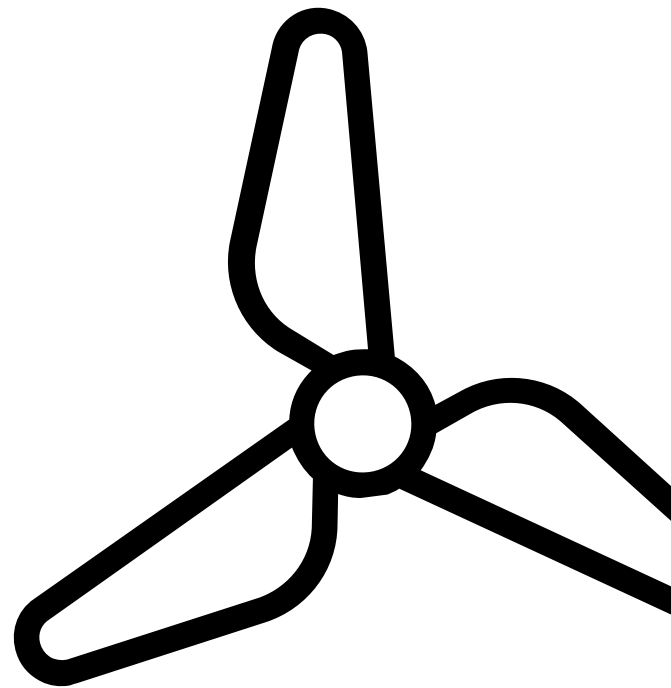
# A changing climate

## He āhuarangi hurihuri

**Responding to climate change is an immediate issue. We are already seeing its impacts in more frequent droughts, extreme weather events and flooding, coastal erosion, and increased fire risk. It affects our weather, health and wellbeing, natural environment, taonga species, mahinga kai, food production, biosecurity, infrastructure, and economy.**

Climate change, including the way in which we choose to respond, has systemic and intergenerational impacts. We choose to act now.

We're considering all options, and will follow through with the ones that will enable the most equitable transition to a low-emissions future and ways to adapt to change where it is inevitable. This gives us the best chance to consider the social, environmental and economic effects of our changing climate.



## **Our response to climate change so far**

We have worked together to form a bold plan to collectively address some of the biggest climate change issues impacting Canterbury. The result? The Canterbury Climate Partnership Plan.

Launched in 2024, and leaning on the findings of the Canterbury Climate Change Risk Assessment 2022, the Canterbury Climate Partnership Plan sets out how we work together, and with others, to support our transition to a thriving, climate resilient, low-emissions region.

The plan has 10 actions. The actions focus on understanding climate risks, reducing emissions, adaptation planning, and using nature-based solutions to mitigate the effects of climate change. It also includes supporting Papatipu Rūnanga with their climate action, integrating climate change considerations into council processes, and identifying and leveraging co-funding and financing opportunities for climate adaptation and resilience.

We are coming to the end of the second year of implementation of the action in the Climate Partnership Plan. Progress on key actions includes:

- data inventory to support the development of a regional visualisation tool for use by councils to support climate adaptation and resilience planning.
- completion of the Emissions Reduction Strategic Overview.
- completion of a review of current climate adaptation work across the region to determine gaps, needs, barriers, and support required for councils for climate adaptation planning.

- completion of the Ecosystem Climate Change Risk and Vulnerability Assessment providing a comprehensive evidence base for the blue green network – the first of its kind in New Zealand.
- completion of a monitoring and evaluation plan.

Significant work is being progressed across the remaining actions in the Canterbury Climate Partnership Plan. As a collective, we will follow the data and national direction to ensure our climate response puts us in a position to address the challenges for our communities.

***The Mayoral Forum will oversee implementation of the Canterbury Climate Partnership Plan.***

# Nurturing important relationships

## Whiria te tangata

**Maintaining positive and enduring relationships with mana whenua, the business community, central government, and our wider communities will play a key part in achieving our goals this term.**

In working alongside mana whenua, a joint understanding of what partnership means will be important. The Mayoral Forum wants to grow its collaboration with Te Rūnanga o Ngāi Tahu as the Treaty partner in the region, as well as with the 10 Canterbury Papatipu Rūnanga. We will explore what enabling mechanisms are available to assist the 10 Rūnanga with engaging and collaborating with us on the key issues for our region and communities.

The Mayoral Forum recognises the need to work across business, government at all levels, mana whenua and communities. Engaging with key influencers across the region and beyond to work collectively to address the drivers for change in Canterbury is one way to create more prosperity for our communities and businesses.

**Strong relationships with Ministers and Members of Parliament is a focus for us. We achieve this through:**

- leveraging our individual relationships for the benefit of the whole region.
- actively making the most of opportunities to engage with Ministers and our local Canterbury-based MPs.
- utilising our relationships with regional public sector officials.
- taking opportunities, such as the Review into the Future for Local Government process, to demonstrate the value and importance of local government.
- showcasing our successes and the resulting benefits to NZ Inc.

The Government's policy announcements about regional/city deals affords us the opportunity to demonstrate the importance of Canterbury to New Zealand's economic prosperity and the significance of fit-for-purpose infrastructure to future-proof our agricultural and tourism industries.

Our relationships with the business community and tertiary education providers are also crucial to achieving some of our economic development and climate resilience aspirations. We need to work closely with industry groups and representative organisations to understand what the issues are so we can target our advocacy appropriately.

Finally, we don't underestimate the importance of our relationship with our communities. Engaging Canterbury's communities in our work, and the work of local government more widely can only serve to strengthen local democracy.

One of the key things we can do is highlight and promote the importance of local government to everyday lives. People use a range of council services each and every day, from when they turn on the shower in the morning, use the transport network to get to work or school, borrow a library book, use a swimming pool or simply walk around a park.

Canterbury is a great place to live and work. We believe focusing on the areas covered in this plan will help us achieve more, both for us in the present, and for those who come after us.



**Back row L-R:** Liz McMillan (Ashburton), Scott Aronsen (Mackenzie), Dan Gordon (Waimakariri), Craig Mackle (Kaikōura), Phil Mauger (Christchurch), Lydia Gliddon (Selwyn)

**Front row L-R:** Craig Rowley (Waimate), Marie Black (Hurunui), Nigel Bowen (Timaru), Dr Deon Swiggs (Canterbury Regional Council), Melanie Tavendale (Waitaki)

## Who is delivering this Ngā kaikawe i te kaupapa

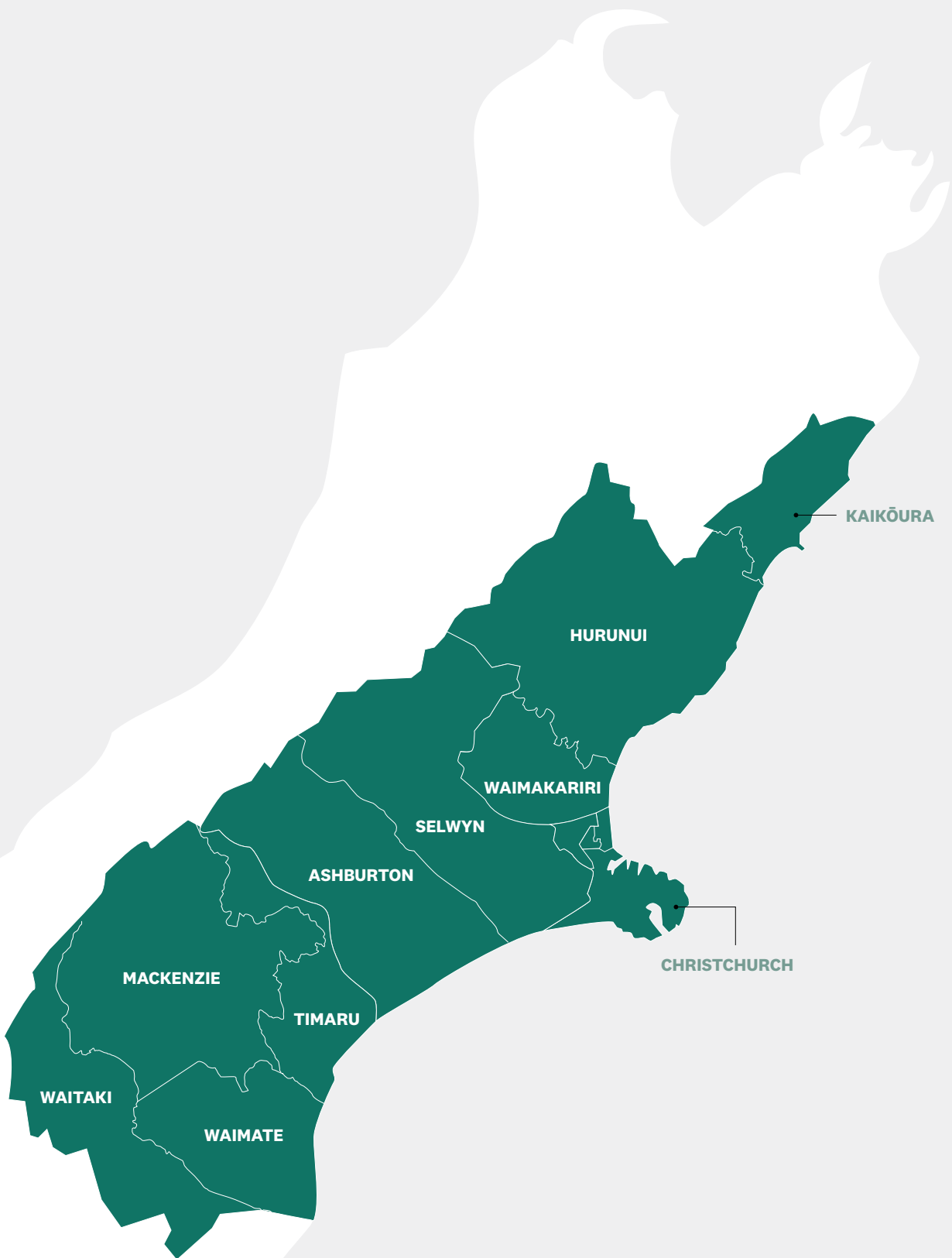
**The Canterbury Mayoral Forum includes the Mayors of the 10 territorial authorities in Canterbury and the Chair of the Canterbury Regional Council.**

The Canterbury Mayoral Forum brings together the region’s leaders to work collectively on the issues that matter most to our communities. Established under the Canterbury Local Authorities’ Triennial Agreement, the Mayoral Forum provides a mandate for local authorities across Canterbury to collaborate, lead, and advocate for the region.

**Through the Mayoral Forum, Canterbury’s local authorities work together to:**

- stand together and speak with ‘one strong voice’ for Canterbury and its communities.
- identify shared priorities and challenges and foster co-operation, co-ordination and collaboration to address them.
- support regional economic and social development through leadership, facilitation and advocacy.
- work together, and with central government and other key sector leaders in Canterbury, to meet community needs and expectations in the most efficient and cost-effective way for ratepayers.

The Mayoral Forum is supported by the Canterbury Chief Executives Forum and five regional forums: Policy, Corporate, Operations, Economic Development and Communications and Engagement. A permanent secretariat, hosted by the Canterbury Regional Council, provides coordination and continuity for this work.





CANTERBURY  
Mayoral Forum